



Whatcom Community Foundation

CONNECTING PEOPLE WHO CARE
WITH CAUSES THAT MATTER

Foundation *focus*

*Personalized Service
Local Expertise
Community Leadership*



News from your Whatcom Community Foundation
<http://www.whatcomcf.org/>

Volume 3, Issue 1
June/July 2010

Welcome! Giving makes us happy. A 2008 [Harvard study](#) concluded that people who give to others are happier in life. How much money people earn is less important for their happiness than how they choose to spend it.

Community Connections and Collaborations

Farm to School Update - Summer Program Gives Kids a Taste for Local Food



Summer offers the perfect opportunity to grow and eat delicious, fresh, healthy local food. Thanks to funding from the City of Bellingham, the Foundation was able to fund a unique project bringing five organizations together to offer children from families living in poverty opportunities to enjoy the summer's bounty while developing healthy eating habits they can sustain at home. [Rebound of Whatcom County](#) is collaborating with [Common Threads Farm](#) and the Whatcom County School Garden Collective, the [Bellingham School District Food Services program](#), [Food Sense](#), and [Bellingham Urban Garden Syndicate](#) (BUGS) to provide healthy local food and seed-to-table education programs through ReBound's Ray of Hope summer camp.

To find out more about other Farm to School projects, visit whatcomcf.org/Farm_to_School2.html

Highlights

WCF's Grants Program Supports Vital Community Initiatives

The Whatcom Community Foundation's competitive grant program recently awarded \$132,600 to 24 community organizations throughout Whatcom County. WCF funding is awarded to projects that increase community capacity; build partnerships with other organizations; and, have the potential for the greatest impact. This year marks the largest Foundation grant round yet thanks to our local donors and two major grants from the Bill & Melinda Gates Foundation and Convergence Partnership. These awards bring the Foundation's grants for the 2010 fiscal year to more than \$2.26 million. Organizations receiving competitive grants...[Read more](#)

Gates Match Campaign Update

As you may know, the Bill & Melinda Gates Foundation awarded the Whatcom Community Foundation a grant for \$75,000 to support community resiliency through the Foundation's grant awards and other work. These funds came as a dollar-for-dollar matching challenge. We are 75% to our goal, and there is still an opportunity for

Three Dimensional Philanthropy



Alcoa Intalco Works of Whatcom County, located in Ferndale, takes an integrated approach to philanthropy. Intalco granted funding to Bellingham's Alderwood PTA to provide funding for 5th grade students to attend the North Cascade Institute's Mountain School. "We saw an opportunity to work directly with the kids," said Heidi Wilson, Intalco's Training Coordinator, Executive Administrator. "That gave the project a whole new dimension for us and for the kids." The award included a "partnership day" on May 12th with the students, PTA members, Alcoa's storm water team and Nooksack Salmon Enhancement Association (NSEA) to mark storm drains near the school.

The project was designed to teach the kids the importance of keeping the storm water drains free of trash and other hazardous materials to protect the fish and other aquatic life. Lindsey Taylor of NSEA told the students about the effects the watershed has on the fish and wildlife. Teachers and parents teamed up with three to four students, donned safety vests and then began the expedition to locate storm drains on the school grounds to post with "No Dumping" markers. Among the group were 5th grade teachers, Michelle Hornof and Dawn Christiana. Wilson added, "This year Alcoa wanted to engage our young grant recipients in an activity to teach them environmental stewardship. This is the perfect way to help kids understand how watersheds work and why they're important."

Pepsi Refresh/Walton Beverage Collaboration

You've probably heard of the national Pepsi 'Refresh' project giving money to nonprofit organizations around the U.S. Now, there's a similar effort underway specifically for our local community. Local Pepsi distributor Walton Beverage and the Whatcom Community Foundation each provided \$13,000 to create a fund that will give a total of \$26,000 to local needs, all based on suggestions from the public. "We're really thrilled be teamed up with the Whatcom Community Foundation, and we are excited at the prospective impact that this will have on our community," said Kaitlin Isle with Walton Beverage.

Mauri Ingram, of the Whatcom Community Foundation, added "The local Pepsi Refresh project demonstrates Walton Beverage's commitment to innovative community philanthropy as it has only been done locally in one other community in the country. We sincerely applaud their leadership in corporate giving."

Local nonprofits submitted grant proposals in the areas of education, health, the arts and culture, food and shelter, the planet (environment) and neighborhoods. Community members can review proposals and vote online at <http://www.waltonbeverage.com/> from August 1st until September 6th. Four grants will be given ranging from \$2,000 to \$10,000. Winners will be announced live at Sunset Cost Cutter and on KGMI 790AM radio on September 14th.

For more information about the Local Pepsi Refresh Project email: localrefresh@waltonbeverage.com or visit <http://www.waltonbeverage.com/>.

your gift to help us meet the match. Please call or visit our website if you would like to help us leverage these funds. [For more information...](#)

Whatcom Community Foundation Recognizes Outstanding Youth In Whatcom County

Sydni Baumgart, 2010 Bellingham Dollars for Scholars Scholarship Recipient



This is the first year Bellingham Dollars for Scholars (BDFS) is a Foundation program. In May, we awarded 97 Bellingham students scholarships for the coming school year. This year's investment in students totaled \$81,000, an increase of \$9,500 (more than 13%) over last year.

Scholarship applications rose by more than 20% in 2010. BDFS advisory committee members reviewed more than 150 applications!

Click here to read more. [Bellingham Dollars for Scholars](#)

The Foundation also recognized twelve students through three other scholarship and award funds: the Cole Student of the Year Award, established by Sue and Craig Cole, for inspirational Whatcom County middle school students; the Clayton D. Millage Scholarship Fund established in memory of beloved Lynden Middle School science teacher, Clayton D. Millage benefitting Lynden elementary and middle school students interested in science; and, the Roy Georgeff Scholarship Fund established in memory of Mr. Roy Georgeff of Lynden, who bequeathed a portion of his estate to establish as a scholarship fund for graduating Lynden High School and Lynden Christian High school seniors. Click [here](#) for more information on awards and recipients.



(right) Kevin DeYoung, Foundation Board Member, Presenting 2010 Cole Award to Julia Lodder at Cornerstone Christian School



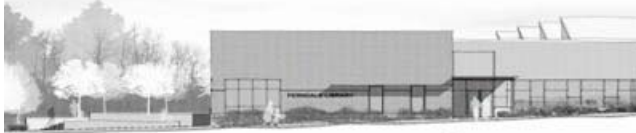
- ▶ Smart Energy
- ▶ Simple Steps
- ▶ Serious Savings

People throughout Whatcom County are thinking about smart energy use, and how it can create a more productive, secure, and healthy community. The Community Energy Challenge is our chance to turn these ideas into action (and become the leading energy efficient community in America!). To find out more or to sign up your home or business today and take the Community Energy Challenge go to: <http://www.communityenergychallenge.org/> sponsored by Sustainable Connections <http://www.sconnect.org/>.

The Foundation is the fiscal sponsor for the following community project. Contributions may be made to the Whatcom Community Foundation, 119 Grand Avenue, Suite A, Bellingham, WA 98225. Please specify the project name in the memo section of your check

Progress Continues on New Ferndale Library Project

The City of Ferndale finalized the purchase of the new library site in late spring. The location is at the western end of Ferndale's downtown business district and adjacent to City Hall. The proximity to City Hall creates an opportunity for planners to conceptualize a civic campus for more efficient use of both properties, including increased parking. Perhaps even more exciting, is the new site's proximity to a magnificent protected wetland, open space and view shed called Shell Marsh.



Mainstreet view for the New Ferndale Public Library

Fundraising for the new library in Ferndale builds momentum as gifts large and small come in from the community. We are at nearly 60% of our \$5 million goal. Ferndale business man Sam Boulos donated \$25,000 to support the new library. And, the Friends of the Ferndale Library donated a second \$10,000 check for the new library in June. The Friends operated a "Build Our Building" (the B.O.B. Shop) storefront on Main Street, selling books, records, antiques and household goods to hundreds of community members to raise the money. The efforts of the Friends were recognized by a recent Mayor's proclamation naming June 7th 2010 as "Friends of the Library Appreciation Day."

Tax deductible donations to the New Ferndale Library Project may be sent to Whatcom Community Foundation (please note "Ferndale Library Project" in the memo section of your check). Online donations may be made at www.whatcomcf.org.

Foundation Grant Helps RE Sources & Faith Community "be cool"

RE Sources launched the *be cool* campaign in May 2008. The *be cool* program helps



Many thanks to the generous donors who invest in our community's young people. As BDFS co-founder and fund advisory committee member, Debbie Granger, likes to tell the kids, "Your community is behind you!"

Upcoming Events

Bellingham Dollars for Scholars will hold their annual "Cheers to Scholars" event to raise funds for local scholarships. Save the date: Saturday, October 2nd at the Bellingham Golf & Country Club. For information and tickets please call us at 360-671-6463.

Washington State Association of Fundraising Professionals (AFP) Philanthropy Day Awards

Each November we join national and international colleagues to celebrate individuals and organizations that have dedicated themselves to philanthropy. Washington State hosts one of the oldest and largest National Philanthropy Day celebrations in the country, with more than 1,000 attendees.

This year's event will be held on Thursday, November 18 at the Washington State Convention & Trade Center. Community leaders, nonprofit organizations, volunteers, and donors will gather to honor outstanding philanthropic leaders young and old, who have invested their passion, time, talents, and financial support to better their community and more. This is also an excellent opportunity for nonprofit organizations to celebrate and honor their own donors and volunteers. Every year attendees are moved and inspired by the stories they hear about honorees.

[Click here](#) for more information, or to register. [Click here](#) to view the 2009 Washington State Award Honorees

Over 35 Whatcom County attendees at the Washington State 2009 AFP Philanthropy Day Celebration



Washington State Community Foundations to Gather in Bellingham

The Bill & Melinda Gates Foundation and the Whatcom Community Foundation are co-hosting a gathering of community foundations from around the state in an effort to strengthen our network.

The goals of the gathering include: sharing expertise, linking initiatives to leverage greater impact

community members discover that global climate change is not a death sentence but a problem to be solved through information and collective action. Thanks to funding from the Whatcom Community Foundation, RE Sources was able to continue the *be cool* program another year, this time focusing efforts in faith communities across Whatcom County. RE Sources made several connections with congregations in 2010, spreading the *be cool* message by building a bridge between traditional environmental organizations and faith organizations. For one Congregation this is how it worked: after receiving the *be cool* promotional letter, Holly Wood, Youth and Family Program Coordinator with St. Paul's Episcopal Church in Bellingham, contacted RE Sources. Holly was looking for support to help incorporate sustainable practices into her congregation. In preparation for Earth Day, she requested RE Sources' *be cool* display to place in their youth hall. Eighty youth members and their families visited the display where they had the chance to learn about the small changes they could make in their everyday lives to help curb climate change.

*(above) Members of St. Paul's Episcopal Church show their support for the **be cool** program and its mission of bringing community members together to build a more sustainable Whatcom County and a more sustainable society as a whole.*

Willows Inn Celebrates Dry Dock

For the next week, the car ferry is gone, leaving only a foot ferry to take you back and forth to Lummi Island. Far from an inconvenience, it is a pleasure. The County has provided a van that operates hourly from 6 am to 11am, and 4 pm to 9 pm. When the van is inconvenient, you can call 758-2620 and get a shuttle. The car ferry will return August 7.

Imagine this for a cheap adventure: Drive out to Gooseberry Point and take the charming 50 passenger foot ferry at 10 or 10:30 AM. Once on the island, hop in the county van waiting at the ferry dock, and arrive at the Willows Inn a few minutes later. Enjoy a leisurely lunch at the Taproot, gather agates on the beach, walk along the road, then board the hourly van back to the ferry. Cost? \$4 per person plus lunch. Value? Priceless. Or take the van from the Willows Inn to the Baker Mountain Trail. Experience the amazing view west over the San Juan Islands, all for free. Or walk a mile down the road and watch us reefnet fishing for Fraser River sockeye.

How about this for a bonding experience? Pile your bikes in your car, park at Gooseberry Point, and bike onto the foot ferry. Bike the 3.5 miles to the Willows without breaking a sweat (barely a hill), and check in for a life-renewing overnight with dinner. Come early enough to get a massage, then sit with a cool drink on the deck overlooking Rosario Strait. Seat for dinner at 7 pm, and watch the sunset, treasuring the long afterglow. There are very few places in the Northwest that can offer you such a spectacular experience, for such an affordable price. With drydock, there is virtually no car traffic, so a leisurely stroll along the road is met with other walkers, and bicyclers, or no one at all.

reservations@willows-inn.com

and increasing our effectiveness in assessing the capacity building needs of nonprofits and filling gaps in local nonprofit ecosystems, as integral parts of our dynamic communities.

Philanthropy Northwest's Annual Conference September 29 through October 1

Whatcom County's own Resort Semiahmoo will set the stage as attendees explore this year's conference theme - *The Power of Place*.

Conference sessions will explore how philanthropy can strengthen communities from the bottom up. What happens when we listen first, and act second? How can funders form true partnerships with grantees, policymakers and organizations? To learn more about the conference and Philanthropy Northwest, go to www.philanthropynw.org.



A community treasure
for generations

"An extraordinary performing arts venue like the Mount Baker Theatre is truly irreplaceable. Its more than the iconic architecture and outstanding performances. The Theatre is part of our community history. To preserve that legacy for our children, we worked with the Whatcom Community Foundation to leave a bequest to the Foundation's Mount Baker Theatre Endowment Fund. It's a wonderful way to support two organizations we believe in."

MADRONA
Society

*Leaving a legacy for
Whatcom County*



Whatcom Community
Foundation

CONNECTS people who care with causes that matter

SERVES as a leader, catalyst and resource for philanthropy

PLAYS a key role in identifying and solving community challenges

CONDUCTS strategic grant making that benefits all of our community in fields such as social services,

education, health, the environment and the arts

PROVIDES flexible and cost-effective ways for generous individuals, families, and companies to contribute to their community now and for all time

SUPPORTS capital projects benefiting Whatcom County

MANAGES charitable funds on behalf of individuals, families and businesses

WORKS with individuals, families and companies to leave a legacy of giving

BUILDS and holds a permanent and growing endowment for the communities changing needs and opportunities.

Whatcom Community Foundation
119 Grand Avenue, Suite A
Bellingham, WA 98225 Tel. 360-671-6463



E-mail: wcf@whatcomcf.org
<http://www.whatcomcf.org/>